

# Dromex



ERGOS INTEC POWER ACCESSORY



**DH-INTECHL**

**Description**

The Dromex® DH-INTECHL, helmet mounted cordless, rechargeable dual light headlamp is used exclusively with the Dromex® Ergo5 Intec power helmet, to help illuminate the workplace during live work on switchgear devices.

This headlamp is a slimline, lightweight and robust device, that doesn't hinder the helmets functioning when in use and features the following:

- The headlamp consists of an LED white spot light and a COB red and white flood light.
- Multifunctional and simultaneous application of having both lights on at the same time during red and white light modes.
- Cordless with two large button switches for ease of use when wearing gloves.
- A built-in power supply which consists of a USB port for connection onto a wall charger, a computer PC USB socket or a Power Bank station.
- The durable housing of the headlamp is IP44, water resistant and dust proof rated, tested to operate up to 1 meter underwater for 30 minutes and requires no maintenance after.
- Type C fast charging and sensor rechargeable technology.
- 60 Degree adjustable tilt.
- 7 Light modes – see explanation below:

**LED Switch**  
3 Modes (White Light)  
100%-50%-Flash



**COB Switch**  
4 Modes (White & Red Light)  
- 100% White Light  
- 50% White Light  
- 100% Red Light  
- Red Flash

- The versatile headband mounting allows for recreational use (hiking, bonfires, camping, riding).

**Special Instructions**

- Do not modify this headlamp.
- Do not use the headlamp for purposes other than intended.
- Do not use strong detergents or abrasive materials to clean the headlamp
- This headlamp is designed exclusively for use with the Dromex® Ergo5 Intec helmet.
- Keep all product packaging and protective films out of reach of children due the suffocation risk.
- Do not focus this light on people's eyes.
- This headlamp comes 80-90% charged, therefore it can be used immediately, however it is recommended that the user fully charge the battery when received. Charge the battery BEFORE it is fully discharged.
- Once fully charged, be sure to disconnect the USB charging cable.
- Keep the battery away from extreme temperatures especially heat.
- DO NOT attempt to open the battery compartment.
- Warning! Children under 6 years old should not use this product without adult supervision.

**Specifications**

Style: Cordless headlamp with self-adhesive grey mounting clip with micro USB charging cable and elasticated headband.

Material headlamp: Polyamide + Polycarbonate + Thermoplastic rubber.

Material mounting clip: Polypropylene with adhesive.

Material headband: Polyester with ABS buckle.

Bulb: Led 5W (Main light), COB 5W (Side light).

Weight: 78.7g (headlamp).

Maximum luminous (brightness): 400 Lumens.

Power supply: 9025440 Battery (3.7V/850mAh).

Charging time: 2 Hours.

Light range: 100 Meters.

Run times - see table below:

Lights		Work Time	Lumen
Main Light	CREE XTE	about 3.5 hours ( high beam)	250 Lumen
COB + Main Light		1.5 hours	400 Lumen
COB		2.5 hours	200 Lumen

**Packaging & Storage**

Packed individually in a box.  
Store and transport the headlamp in a manner that prevents damage.  
Keep the headlamp away from heat sources.  
Protect against mechanical damage, sunlight, moisture, exhaust gases, etc.

**Compliance & Conformity**

- IP level: IP44.
- ROHS compliant.
- BS EN IEC 55015:2019+A11:2020 - Limits and methods of measurement of radio disturbance characteristics of electrical lighting and similar equipment.
- IEC 61547:2009 - Equipment for general lighting purposes - EMC immunity requirements.
- BS EN IEC 61000-3-2:2019+A1:2021 - Electromagnetic compatibility (EMC) - Limits. Limits for harmonic current emissions (equipment input current ≤ 16 A per phase).

- BS EN 61000-3-3:2013+A2:2021 - Electromagnetic compatibility (EMS) - Limits. Limitation of voltage changes, voltage fluctuations and flicker in public low-voltage supply systems, for equipment with rated current ≤ 16 A per phase and not subject to conditional connection.

**Cleaning & Maintenance**

The headlamp should be stored and transported in a case (suitcase) in a manner that protects it against mechanical damage.  
Store the headlamp in a dry and well-ventilated room, away from heat sources, in a chemically non-aggressive atmosphere.  
Protect against sunlight.  
The headlamp should be cleaned after each use.  
Use a dry cloth for cleaning.

**Inspections before use**

- Before each commencement of work, the headlamp should be visually inspected and its operation checked. The visual inspection includes checking:
  - no visible damage to the headlamp housing,
  - no visible damage to the mounting clip,
  - the correctness of mounting the headlamp on the helmet,
  - the correct operation of the headlamp.
- A damaged headlamp (mechanical damage to the housing or the mounting clip), malfunctioning or dirty, should not be used in live work.
- If the headlamp gets wet, dry it thoroughly before use.
- WARNING! In case of doubt, after visual inspection or malfunction, the headlamp should be withdrawn from use in live work.

**How to attach the light onto the helmet**

- Remove the sticker from the mounting clip.



- Attach the mounting clip onto the helmet above the helmet visor chin protector.



**Dromex: 30 Umganu Road, Flanders, Blackburn  
Cornubia Ridge Logistics Park, Kwazulu-Natal, 4319, South Africa  
T. +27(31) 713 1960 E. info@dromex.co.za www.dromex.co.za**

Disclaimer  
Dromex reserves the right to make changes without further notice to any products herein to improve function, design or reliability and validity. Dromex does not assume any liability arising out of the application or use of any product described herein. Reproduction in whole or in part is prohibited without the prior written consent of the copyright owner.  
Latest update: 16/04/2024

- There must be a 1cm spacing between the bottom of the mounting clip and helmet visor chin protector.



- Allow the mounted clip to dry for 24 hours before inserting the headlamp.



- Attach the charged headlamp onto the mounting bracket
- Attached the usb cable to the C point on the headlamp.



- Once fully charged the light on the power button of the headlamp will turn green.



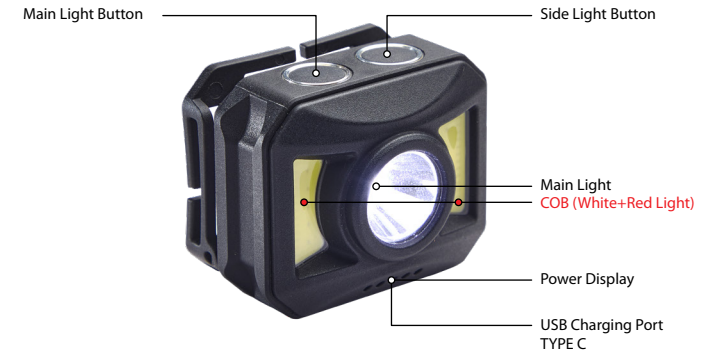
- Attach the headlamp



- The lamp position is adjustable



### Marking



### Disposal

All industrial waste should be disposed of correctly per local regulations and good disposal practice. Head protective devices should be disposed of considering the hazardous substance they were used for. Please consider recycling.

**Dromex: 30 Umganu Road, Flanders, Blackburn  
Cornubia Ridge Logistics Park, Kwazulu-Natal, 4319, South Africa  
T. +27(31) 713 1960 E. info@dromex.co.za www.dromex.co.za**

Disclaimer  
Dromex reserves the right to make changes without further notice to any products herein to improve function, design or reliability and validity. Dromex does not assume any liability arising out of the application or use of any product described herein. Reproduction in whole or in part is prohibited without the prior written consent of the copyright owner. Latest update: 16/04/2024